

# NORLEY PRIMARY SCHOOL NEWSLETTER



## CHINESE NEW YEAR CELEBRATIONS

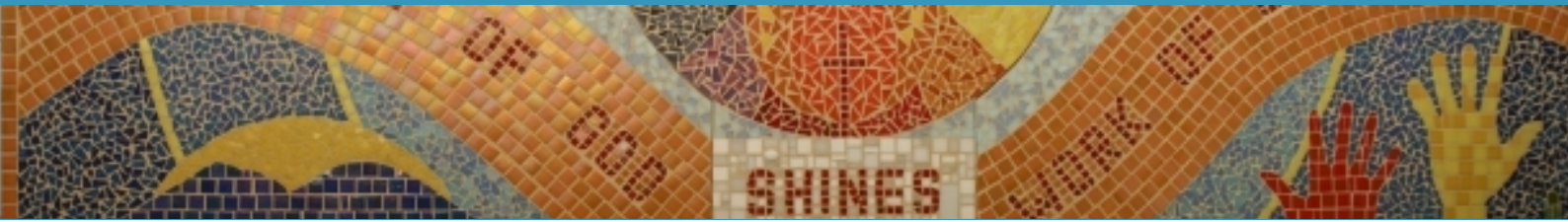
Norley CE Primary School will be celebrating the Lunar Year of the Snake on Friday 31st January.

- Children are welcome to come to school wearing 'something red' for a donation to the PTFA.
- Each class is celebrating Chinese New year with a craft activity organised by Mrs Jones and carried out with their teachers.
- Mrs Richmond is cooking up a Chinese themed lunch - a survey is on School Spider if your child is on packed lunches but would like a school dinner for the day.
- PTFA Light party 6-7.30pm. This is a ticketed event after school with a disco and crafts. There will be a chance to buy glow sticks, glow in the dark tattoos and hotdogs (£1 each).
- We are working together to make as long a snake as we can out of chains. If you would like to add to this, there will be a box in school reception until Thursday 30th January. Links for the chain should ideally be around 52mm x 297mm (2" x 12", or one long quarter of a sheet of A4 paper). They can be made of any suitable material including paper, knitting, crochet, card, fabric scraps, felt, or even recycling. We will gladly accept lengths of chain or individual strips as you prefer. How long can we make our chain snake stretch?



Thank you to the members of the community who have already delivered links to Reception.





## FLYERS

Please see the attached flyers which detail an exciting Light Party which will be ran by the PTFA on Friday 31st January and information for Parents from CWAC.



## HOMEWORK

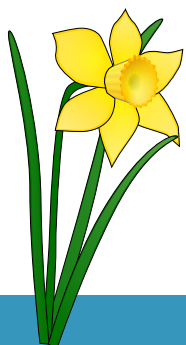
The children's topic homework is uploaded onto the school website under their class pages. It is due back into school on Friday 14th February for homework sharing with the rest of their class.



## REMINDERS



- Our school gate opens at 8.45am and closes at 8.55am. Any children here before that time are unsupervised so please don't drop off too early.
- We have an unofficial one-way system when dropping off and picking up children from school. We ask that you drive up Hough Lane towards Fingerpost Lane and not down towards the direction of the shop. Since introducing this we rarely have any congestion along Hough Lane.
- Parking - please don't drive into the school car park, unless you need to use the disabled car park space, especially if you are dropping off and picking up from Link Club before and after school.
- Please use the path across the car park and don't cut across it, there are cars moving both in the morning and after school. We also have a one-way system on and off the playground, this is because the path is so narrow going past the field and we have had some bumps in the past. Please enter the playground on the left of the building and not past the school kitchen. When leaving please follow the path past the school hall.

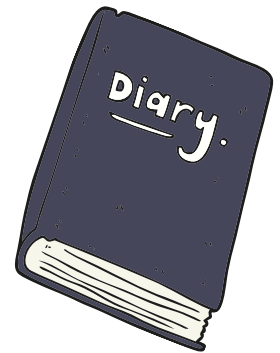






## DATES FOR YOUR DIARY

- 28th January - Fun Food Chef in school
- 29th January - Year 5 to go and watch Arabian Nights at Weaverham High School
- 31st January - Chinese New Year Celebrations in school including special lunch
- 31st January - PTFA Light party (flyer attached)
- 14th February - Homework sharing and break up for half term
- 24th February - Return to School
- 26th February - SATs Meeting for Year 6 Parents at 3.15pm
- 19th March - London meeting for Parents of Class 4 at 3.15pm
- 28th March - Special Lunch for someone who Mothers you at 12 noon.
- 1st April - Parents Evening
- 3rd April - Easter Service in church at 2pm
- 4th April - Break up for Easter



## PRAYERS

This week we would love you to join with us in praying for our leaders and communities: For wisdom, compassion, and the ability to make decisions that benefit the greater good.

# HOPE

The Christian Value we are focusing on in school this half term is Hope.

*“For I know the plans I have for you,” declares the Lord, “plans to prosper you and not to harm you, plans to give you hope and a future.”*

**- Jeremiah 29:11**