

NORLEY PRIMARY SCHOOL NEWSLETTER



SNOW DAYS

Last week the snow turned Norley school into a winter wonderland and brought lots of opportunities for fun outside.



THANK YOU!



Thank you so much to our amazing PTFA who have paid for the whole school to go to the Pantomime in December. This just shows the dedication and hard work that the team have put in throughout the year to be able to fund a whole school event. We are extremely grateful.



HOLIDAY

Holidays in term time unfortunately cannot be authorised. If you take your children on holiday in term time, there is a form that needs to be filled in for the Education Welfare Officer in advance of the holiday. This is available from Mrs Kelly. Holidays in term time will incur a fine as per our 'Leave of Absence Policy' which is available on the school website.

CHRISTMAS JUMPER SWAP



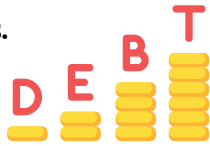
In preparation for our Christmas Jumper Day on 12th December the PTFA have asked if any outgrown Christmas jumpers can be brought in and put in with the used uniform in Reception. Rather than buy a new Christmas jumper it would be great to either swap for one for a larger size or give a donation of £1 to the PTFA.

NUT FREE PACKED LUNCHES



Due to allergies in school we would kindly ask you to not send nuts into school as a snack or as part of your children's packed lunches.

PARENT PAY



Please can we ask that all of you check your Parent Pay accounts. There are lots of outstanding payments that take up valuable time to chase. We are in the process of booking school trips for next term which is made much more difficult if payments are still outstanding. Please can you also ensure that there is a balance on your child's snack and lunch money accounts. Your co-operation would be most appreciated.

CUDDLE A GUIINEA

If anyone would like to take Barry the guinea pig home for the weekend or the Christmas holidays then please contact the school office. He is a delight and very easy to look after.

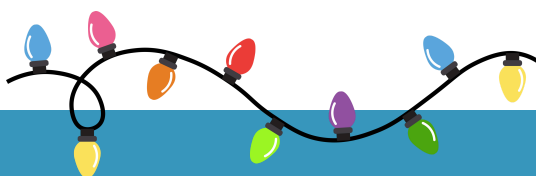


PUNCTUALITY

Our school gate opens at 8.45am and closes at 8.55am. Any children dropped off before this time are not supervised so please do not drop off too early. Children arriving after 8.55 need to be signed in by a Parent/Carer and will receive a late mark as the registers in class will already have been completed.

CHRISTMAS LIGHT SWITCH ON

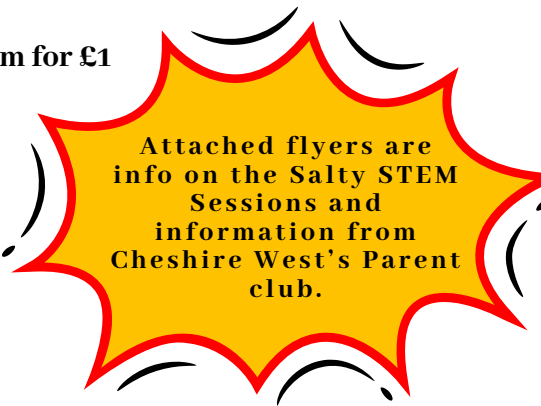
Our School Choir have been asked to sing at the Norley Village Christmas light switch on at the Tigers Head Pub on 1st December at 6pm. If any of our children would like to join them to sing then please meet in the Tigers Head Car park at 5.45pm.





DATES FOR YOUR DIARY SO FAR.....

- 27th November - Violin concert at 10am for Parents of Class 3
- 1st December - Norley Christmas lights switch on. Meet at Tigers Head at 5.45.
- 4th December - Year 2 trip to the Christmas Journey in Frodsham
- 5th December - Choir singing at Mount Pleasant Nursing Home
- 6th December - Christmas Carol Concert at 10.30am in School Hall - All Parents welcome
- 10th December - Nasal flu for all children
- 10th December - Choir to sing at Delamere cafe at 10am
- 12th December - Christmas Jumper Day - Jumper to be worn over uniform for £1
- 13th December - Christmas Play Dress Rehearsal
- 16th December - Christmas Play at 2pm and 6pm
- 17th December - Christmas Play at 2pm and 6pm
- 18th December - Whole school trip to the Pantomime - **Funded by PTFA**
- 19th December - Homework sharing **(Please note change of date)**
- 19th December - Christmas Lunch at School
- 20th December - Christingle at Church - 10am
- 20th December - Finish for Christmas. **Children to be picked up at 1.15pm OR 3.15pm**



Attached flyers are info on the Salty STEM Sessions and information from Cheshire West's Parent club.

FUNDRAISING

There's a great initiative by Asda Rewards that involves no work for the school, PTFA or parents but generates funds for the school. If you shop in Asda and have their rewards app you can select our school (no set up required) to receive funds at no detriment to your rewards! It is their cash pot for schools initiative and takes 2 minutes to set up. There are 87 days left to fundraise and we have over £50 already. Even better the money goes straight to school with no restrictions on how to spend it. Real enrichment for our children.



SCHOOL DINNERS

The week starting 25th November will be week 3 of school dinners and the menu can be found on our website.

PRAYERS

Our prayers this week are for anyone feeling lonely throughout the festive period.



Wisdom

For the LORD gives wisdom;
from his mouth come
knowledge and understanding.
Proverbs 2:6

The Christian Value we are focusing on in school this half term is Wisdom.